

VIO 4K - Ref. V701

NEW

The Ultimate Video Processing Tool Box



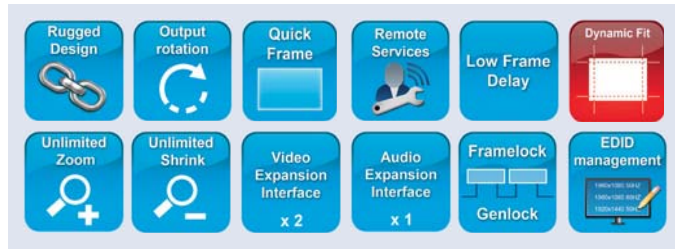
INPUTS



SIMULTANEOUS OUTPUTS



FEATURES



VIO 4K at a glance

- ▶ The "All in One" solution for any conversion
- ▶ User-friendly and Intuitive Graphic Interface
- ▶ Diverse selection of option cards for video and audio system expansion
- ▶ Advanced LED Wall functionalities
- ▶ 10-bit processing 4:4:4

To control VIO 4K

- ▶ Web-based Remote Control Software (Web RCS)
- ▶ VRC300: Vertige™ (Available 2016)

Option

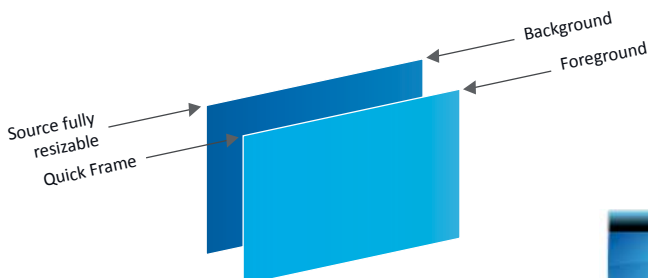
- ▶ OPT-4K60P-VIO4K: DP1.2 and HDMI 2.0 - Expansion Interface (Available 2016)
- ▶ OPT-AUDIOXLR-VIO4K: XLR Audio - Expansion Interface (Available 2015)
- ▶ OPT-QUADSDI/OUT-VIO4K: 4K@60 in (HDMI 2.0 & DP1.2) to Quad-SDI 3G out - Expansion Interface (Available 2016)
- ▶ OPT-12GSDI-VIO4K: 12G-SDI - Expansion Interface (Available 2016)
- ▶ OPT-6GSDI-VIO4K: 6G-SDI (Compliant Level A & B) - Expansion Interface (Available 2016)

Key features

- ▶ **7 Inputs**
 - DisplayPort up to 4K@30Hz
 - HDMI up to 4K@30Hz
 - 6G-SDI loop
 - Universal Analog
 - DVI Dual-Link up to 2560x1600@60Hz
 - Video Optical SFP Module cage
 - HDMI up to 2K/1080p (Front panel - Input #7)
 - 3.5mm jack for stereo audio In (Front panel)
- ▶ **Output and plugs**
 - DisplayPort up to 4K@30Hz
 - HDMI up to 4K@30Hz
 - 6G-SDI (Compliant Level A & B)
 - Universal Analog
 - DVI Dual-Link up to 2560x1600@60Hz
 - Video Optical SFP Module cage
 - 6.35mm stereo jack for Headphone

▶ Key features

- Up to 9 inputs and 3 independent outputs
- 2 slots for video option card system expansion
- 1 slot for audio option card system expansion
- The source can be positioned anywhere on the screen, and up to 100% outside the screen in any direction
- Easy Area Of Interest management
- Genlock: HD/SD-SDI or Analog HD Black and Black Burst (Loopthrough)
- All Genlock timings meet broadcast ITU/SMPTE standards
- Output rotation: 90°, 180° and 270° per output
- Unlimited zooming and shrinking
- Live monitoring of sources on the large 3.5" Color TFT LCD Display
- Cross hatch, Dynamic Pattern
- New audio management: 8 channels up to 96kHz (Digital audio, AES & 3id)
- Audio Delay compensation up to 300ms
- Field swappable DVI I/O boards
- Memory space for 4 uncompressed frames in 4K
- USB Host: mass storage
- USB Device link



Video available on YouTube or on www.analogway.com



ANALOG WAY®
Pioneer in Analog. Leader in Digital

The "All in One" selection for any conversion



Anything In

- ▶ Composite (PAL, NTSC)
- ▶ S-Video
- ▶ YUV (Y CB Cr)
- ▶ Computer (RGBHV, RGBS, RGsB)
- ▶ HD-YUV (HD-YCrCb)
- ▶ HD-RGB
- ▶ DVI
- ▶ DisplayPort
- ▶ HDMI
- ▶ HD/SD-SDI
- ▶ 3G-SDI
- ▶ 6G-SDI (Compliant Level A & B)
- ▶ 12G-SDI (Expansion Interface)
- ▶ Digital Audio: AES/EBU & i3d (Expansion Interface)

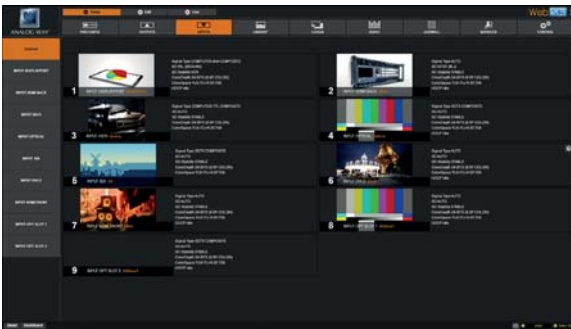
Anything Out

- ▶ Analog Audio Stereo
- ▶ Digital Audio
- ▶ 1080P/1080i
- ▶ 720P
- ▶ 480P/480i
- ▶ 2K/1080p
- ▶ WUXGA (1920x1200@60Hz)
- ▶ WQXGA (2560x1600@60Hz)
- ▶ UHD (3840x2160@30Hz)
- ▶ 4K (4096x2160@30Hz)
- ▶ Ultra High Resolution up to 4K@60P (Expansion Interface)

Universal system for format conversion

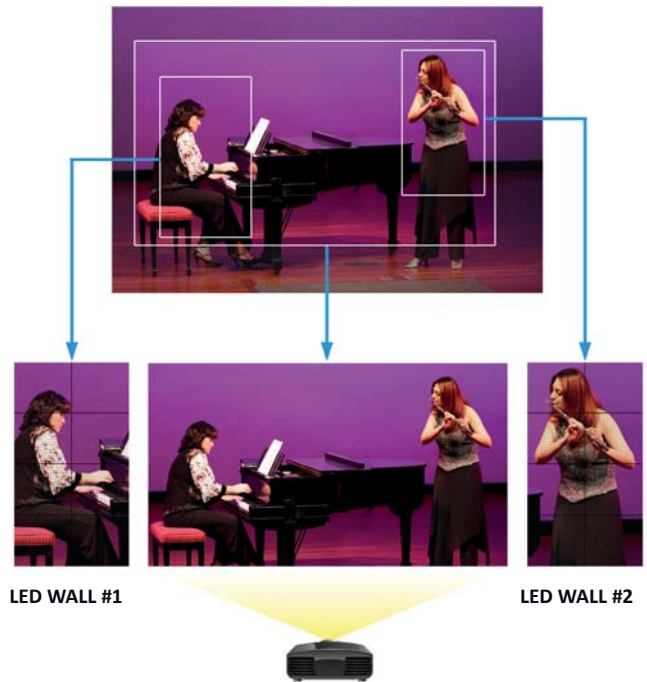
- ▶ Upward conversion
- ▶ Downward conversion
- ▶ Transcoder
- ▶ Coder
- ▶ Aspect ratios
- ▶ Multi-format Analog Genlock
- ▶ Dynamic Test Patterns
- ▶ Pan & Zoom function
- ▶ Freeze Frame
- ▶ Aperture correction
- ▶ Advanced LED Wall functionalities
- ▶ Audio and Video monitoring directly from the front panel
- ▶ Output rotation
- ▶ Custom Formats
- ▶ EDID Management
- ▶ Genlock/Framelock
- ▶ Gamma correction & Color Temperature settings (Expansion Interface - Available 2016)

Web RCS



The **Web RCS** offers a user-friendly graphic interface. With dynamic snapshots of the connected sources available in the interface, the intuitive dashboard allows operators to fully adjust their displays and control them live during their events.

Use case*



LED WALL #1

LED WALL #2

- Simultaneous source conversion to 3 independent outputs
- Extraction of different parts to produce creative displays

* The **VIO 4K** can only process one input at a time, and therefore even when equipped with additional expansion interfaces, the device can only output three independent scaling of the same source, and cannot output three different sources.

Dimensions

- ▶ 2U, 19"
- ▶ D 17.3" x W 15.75" x H 3.46"
- ▶ D 400 mm x W 440 mm x H 88 mm

Weight

- ▶ 6.2 kg/13.7 lbs

Power Supply

Internal, universal, automatic, 100-240 VAC 3,2A 50/60Hz; 120W (UL, CSA, GS, CE), AC Main switch with Fuse (cartridge 5x20 4A Fast 250VAC)

Supplied with

- ▶ 1 x Power supply cord
- ▶ 1 x Ethernet cross cable (For device control)
- ▶ 1 x USB 2.0 A-Male to B-Male cable (for device control)
- ▶ 1 x Rack mount kit (front ears)
- ▶ 1 x User Manual (PDF Version)*
- ▶ 1 x Quick Start Guide*

Warranty

3-year warranty on parts and labor back to factory.



* All User Manuals and Quick Start Guides are also available on www.analogway.com

i Specifications subject to change without prior notice

All technical specifications are available on our website